

Made in Germany

fläsh.

Tooth Whitening
Dentists Trust,
Patients Love.

flaeshapp.com



fläsh.

Tooth Whitening



Turn patients into fans of your clinic!

Tooth whitening can be the key to the perfect smile that patients want – to brighten up their smile or to add the finishing touch to their restorative or orthodontic treatments.

fläsh is the professional tooth whitening system that delivers reliable results, is easy to use for the entire dental team, simplifies workflows and ensures that every patient receives a safe and comfortable treatment.

With fläsh, dental practices can stop worrying about results and focus on creating life-changing, confident smiles for their patients.

With fläsh, you're the expert who delivers brighter smiles that patients love – because your success is our mission.

Happy patients, every time

Reliable results that boost patient confidence and loyalty.

Effortless for the clinical team

Easy-to-use system designed to simplify workflows.

30 years of expertise

Trusted German innovation ensures safety and consistency.

fläsh.

Whitening Lamp



+



Perfect synergy – the secret to exceptional whitening results!

The secret to exceptional results lies in the perfect combination of the fläsh Whitening Lamp and the fläsh Light Whitening Gel.

The latest high-performance LED technology with a high-intensity focused light spectrum with visible blue light. Ergonomic operation due to the easy lock system allows for perfect positioning in front of the patient. Special settings for sensitive teeth and single tooth whitening. Light output can be varied. Optimal results with fläsh Chairside Light Whitening Gel. Safe working temperature.

Advanced technology

3 high-performance LEDs. High-intensity blue light spectrum (460 nm, 190 mW/cm²)

Long lifespan

LEDs last for over 10,000 applications

Ergonomic design

Easy lock system for precise patient positioning

Customizable settings

Modes for sensitive teeth and single tooth whitening

Variable light output

Adjustable for optimal results

Safe temperature

Ensures patient comfort

Optimal pairing

Best results with fläsh Chairside Light Whitening Gel

System includes

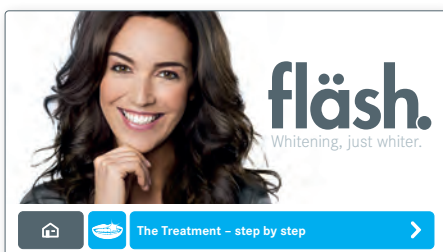
Whitening Lamp, 3 safety goggles, fläshcard system for gel, full-color touch screen

fläshcard

Time management system



Virtual instructions directly on the device



3 whitening programs
Constant / Pulse / Single

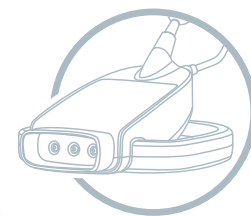


Determination of whitening shades achieved



fläsch.

Chairside Light
Whitening System

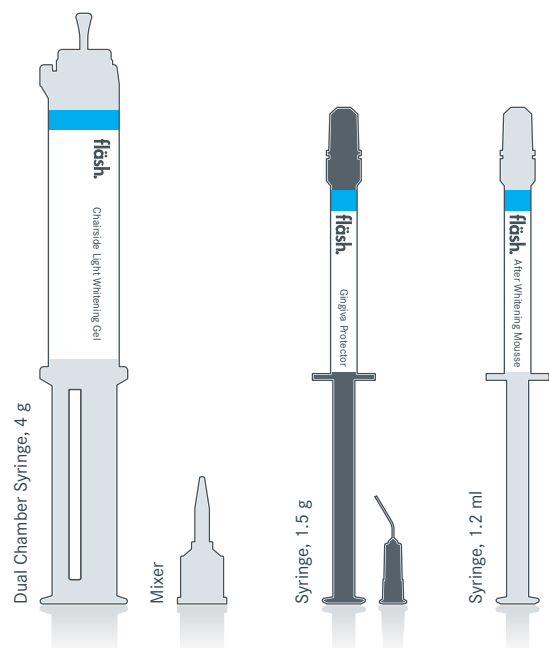


Gentle, effective and fast

fläsch Chairside Light Whitening with active chlorophyll is gentle on teeth with a low sensitivity rate. Effective whitening in 3–4 treatments of 15 minutes each in one session.

Cosmetic tooth whitening with 6% hydrogen peroxide. Medical tooth whitening with 32% hydrogen peroxide and with medical indication only.

The treatment can be intensified by subsequent use of fläsch Take Home Whitening.



fläsch
Lip Retractor



Video: Treatment
step by step

Content of 2-Patient Kit*:

- 2 x Chairside Whitening Gel, 4 g
- 2 x Gingiva Protector, 1.5 g
- 2 x After Whitening Mousse, 1.2 ml
- 2 x Lip Retractor
- 1 x 120 minutes timocard

Effective Whitening

Achieves results in 3–4 sessions of 15 minutes each

Optimized for fläsch Whitening Lamp

Delivers the whitest results

Precise application

Green gel ensures accuracy

Suitable for adults

For patients aged 18 and above

Available concentrations

Medical tooth whitening 32% HP

Cosmetic tooth whitening 6% HP

* Content of kits may vary by country

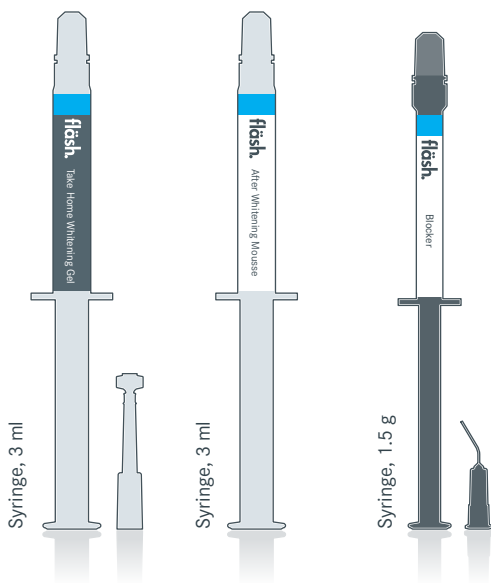
fläsch.

Take Home
Whitening System



With laboratory-made customized trays

Use as stand-alone treatment or follow-up.
For use in bleaching trays. Rounds up the
whitening offer in the clinic. Gentle whitening
with minty taste.



Content of 1-Patient Kit*:

- 4 x Whitening Gel, 3 ml
- 1 x After Whitening Mousse, 3 ml
- 2 x Bleaching Foil*
- 1 x Blocker*
- 1 x Traybox

Blocker (optional)

As spacer for laboratory models

Traybox

Keeps the custom-made trays save and clean

Suitable for adults

For patients aged 18 and above

Cosmetic tooth whitening

10% CP (≈3,5% HP)

16% CP (≈5,6% HP)

* Content of kits may vary by country

Effective gel

Provided in 3 ml syringes for easy application

After Whitening Mousse

Desensitizes and remineralizes teeth

Bleaching Foil (optional)

For a perfect fit of laboratory-made and customized trays

HP: hydrogen peroxide, CP: carbamide peroxide

fläsch.

After Care

The best post whitening treatment for your patients

The ideal care for white teeth before and after whitening treatments. Intended for daily use. Even for sensitive teeth. Strengthens the enamel with 17% hydroxylapatit. Double caries protection with sodium fluoride (1100 ppm F) and 30% xylitol. Supports salivation, which in turn reinforces remineralization.

No SLS. No triclosan. No bleaching agents.
Gentle cleaning agents. New: No titanium dioxide.
Protects against new tartar formation.



Refreshing **LIME-MINT**

Whitening
Toothpaste
Care & Repair



flaeshapp.com

Tip: Use flaeshapp to show the whitening result!



Seamless integration into your clinic

Tooth whitening is an essential part of modern aesthetic dentistry. To successfully incorporate it into your practice, consider these key steps:

Empower Your team

The fläsh Whitening Lamp features a guided treatment mode, making the procedure easy to follow. A step-by-step instructional video is also available at flaesh.com. Leading by example is powerful; when your team members experience whitening themselves, they become enthusiastic advocates for the service within your clinic.

Raise patient awareness

Most patients don't visit a clinic specifically for tooth whitening—but they do want a brighter smile! Your dental team can effortlessly introduce whitening as a complementary treatment. Highlight this option during consultations and in your patient information materials, as shown on the next page.

Enhance the impact of your work

Showcasing natural-looking implants, orthodontic treatments, or restorations is even more compelling when paired with a radiant, white smile. Use before-and-after images to demonstrate the transformation—both in your practice and on social media.

Turn happy patients into loyal advocates

A confident, whiter smile spreads joy. Satisfied patients share their experiences, bringing in new clients through word-of-mouth recommendations. Make tooth whitening a key part of your clinic's success!

The way to a perfect smile

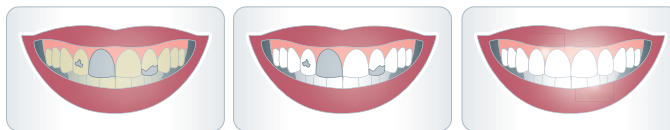
Tooth whitening treatments give your patients better smiles. They also give an additional value for dental treatments or can restore pathologically discolored teeth to their natural state. With the fläsh patient information leaflet you can easily explain the possibilities for a whiter smile to your individual patients.

Digitally available on www.fläsh.com and also in the the flaeshapp.com

Excerpt from the patient brochure.

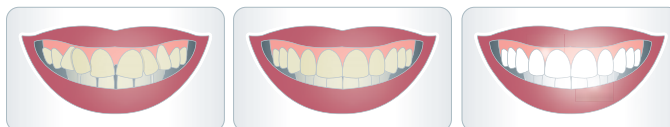
Perfect in combination with your treatment.

Tooth whitening before dental restoration



For fillings, inlays, crowns, and implants, whiten the remaining teeth beforehand. Dentures cannot be color-matched later.

Tooth whitening after orthodontic treatment (aligner)

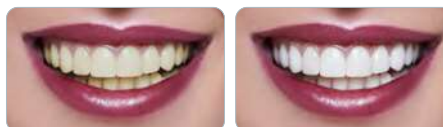


Orthodontic treatment for adults ensures proper tooth alignment. fläsh tooth whitening adds the perfect finishing touch to your smile.

Single tooth whitening



Also suitable for whitening and adjusting individual teeth.



Refresher treatment is possible at any time.



Patient leaflet for your waiting area

fläsh.

Marketing



Scan to start!

flaeshapp.com

Show and tell your patient

Instant AI-driven preview of achievable whitening results. Can be used by clinic team and patients. No app installation.

Simply open **www.flaeshapp.com** in your browser. Then use the camera on your device.

Tip: Add **flaeshapp.com** to your phone's home screen for quick access and to show patients their best smile. After taking a photo, rotate your phone horizontally for a before-and-after comparison.



Patient marketing matters

Tooth whitening is a powerful way to attract new patients, enhance other treatments, and grow your practice.



Modern art acrylic wall hanger, 60 x 60 cm



Professional acrylic wall hanger, 60 x 60 cm



21 x 15 cm, high-quality acrylic stand with changing motifs for your counter or waiting room area.

Feel free to ask for further marketing support.

fläsh Whitening Lamp

1 x Whitening Lamp / 3 safety goggles / 1 acrylic advertising plate, 60 x 60 cm

fläsh Chairside Light Whitening System 32% HP

2-Patient Kit: 2 x Gel, 32% HP, 4 g / 2 x Gingiva Protector, 1.5 g, 2 x After Whitening Mousse, 1.2 ml, 2 x Lip Retractor + 120 minutes timecard

32% HP: [Medical tooth whitening only with medical indication](#)

fläsh Chairside Light Whitening System 6% HP

2-Patient Kit: 2 x Gel, 6% HP, 4 g / 2 x Gingiva Protector, 1.5 g, 2 x After Whitening Mousse, 1.2 ml, 2 x Lip Retractor + 120 minutes timecard

6% HP: [Cosmetic tooth whitening](#)

fläsh Take Home Whitening System 10% CP (≈3,5% HP)

1-Patient Kit: 4 x Gel, 10% CP, 3 ml, 1 x After Whitening Mousse, 3 ml / 1 x Traybox, (optional: 2 x Bleaching Foil / 1 x Blocker), [cosmetic tooth whitening](#)

fläsh Take Home Whitening System 16% CP (≈5,6% HP)

1-Patient Kit: 4 x Gel, 16% CP, 3 ml, 1 x After Whitening Mousse, 3 ml / 1 x Traybox, (optional: 2 x Bleaching Foil / 1 x Blocker), [cosmetic tooth whitening](#)

fläsh Whitening Pen

4 ml, 16% CP (≈5,6% HP), mint taste, [cosmetic tooth whitening](#)

fläsh Whitening Toothpaste, Lime-Mint

75 ml, 30% xylitol, 17% hydroxylapatite

HP: hydrogen peroxide, CP: carbamide peroxide

Made in Germany

fläsh.

Choose our products for a superior whitening and care experience, enhancing your patients' smiles and reinforcing your clinic's reputation for excellence.



Find your local dealer.

WHITEsmile GmbH
Weinheimer Straße 6
69488 Birkenau/Germany
+49 (0)6201 8432 190
info@flaesh.com

flaesh.com

All whitening products are intended for professional applications and are only applied or dispensed by dental practices.

Subject to technical changes and errors in the text.

The selection of products may vary in different countries. Please ask your local dealer.

REF 900A4, 03/2025, ENGLISH